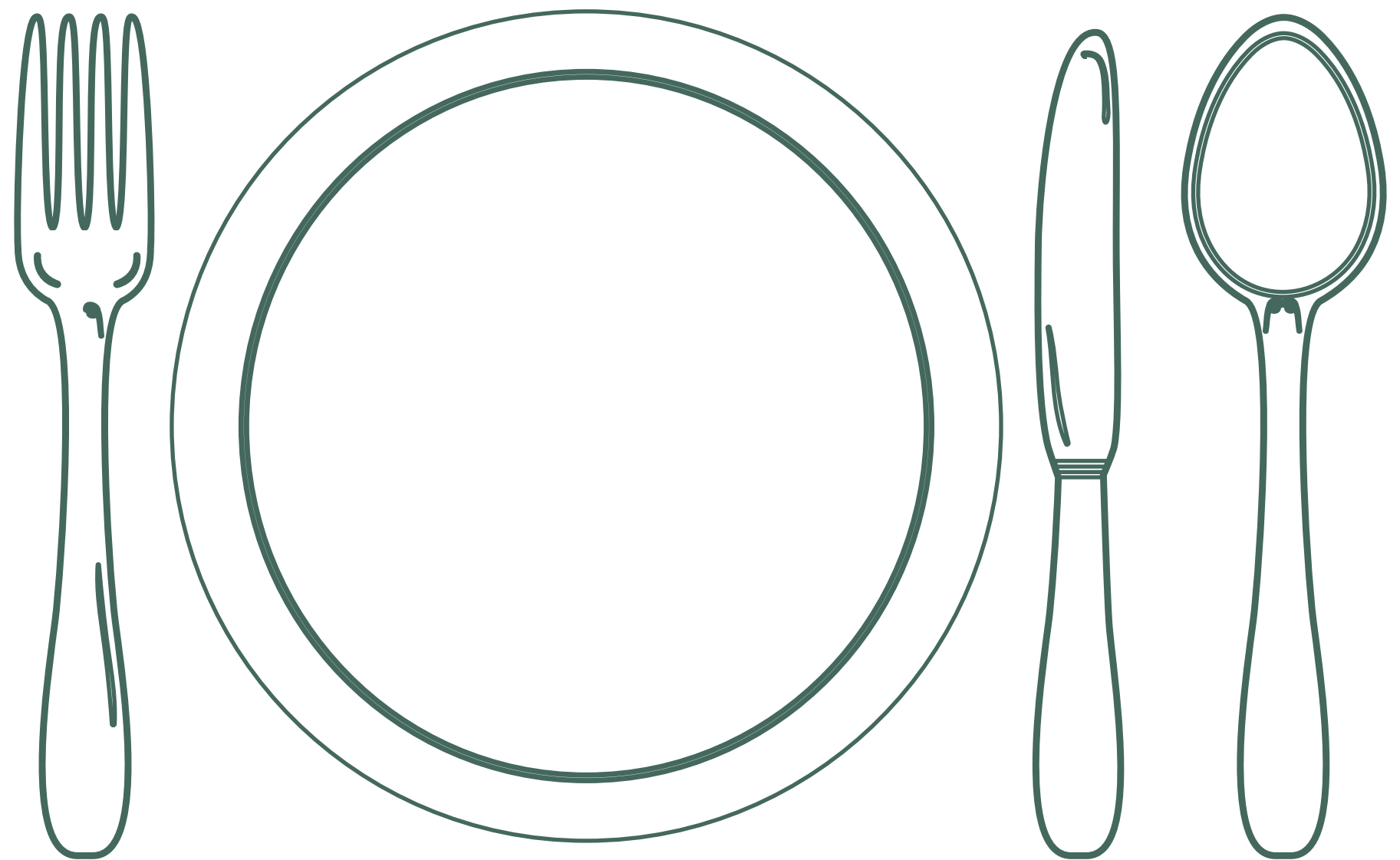


makers
of
sustainable
spaces.



GROWING POPULATION - Many mouths to feed



OBESE - More and more people are diagnosed with obesity and numbers are growing.



PSYCHOLOGICAL DISTANCING - Understanding the distance between farming and consuming



FOODMILES - Why do we need to import our food if we can easily grow it ourselves?



THE CONCRETE CITY - Flooding caused by climate changes, heavy rainfall and a shortage of water drainage



TREND - Ecosystem services and green infrastructure



Why?

33 %

33 % of income is for household consumption

65 %

65 % of environmental impact is related to home and agricultural activities

42 %

42% of the earth's surface is used for agriculture

+ %

Demand for food is ever increasing, calling for smarter and resilient solutions

1.3 b

1/3 or 1.3 billion tons of food is wasted every year

1/3

Agriculture accounts for 1/3 of global greenhouse gas emissions

2,400

On average, vegetables travel 2,400 km from farm to consumer

- %

Farming is the most powerful driver of deforestation and loss of biodiversity

MORE POTENTIAL - Can green roofs do more?

W.T.F.
where's the food ?

HEALTHY BALANCE - The aim is to reconnect people with nature while growing healthy calories for the community.

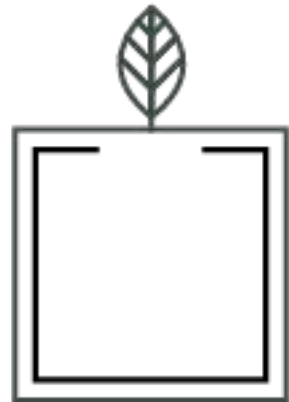


How?

**Makers of
sustainable
spaces.**

For cities, for life, for
our future. We
design and create
green oases in and
on top of buildings!

3. How | MOSS



EXTERIOR

With exterior projects we focus on ***intensive, extensive and vertical green solutions*** on the facades or on top of buildings. Exteriors offer plenty of space to come up with innovative solutions to make the city greener, healthier, more livable and even commercially interesting.



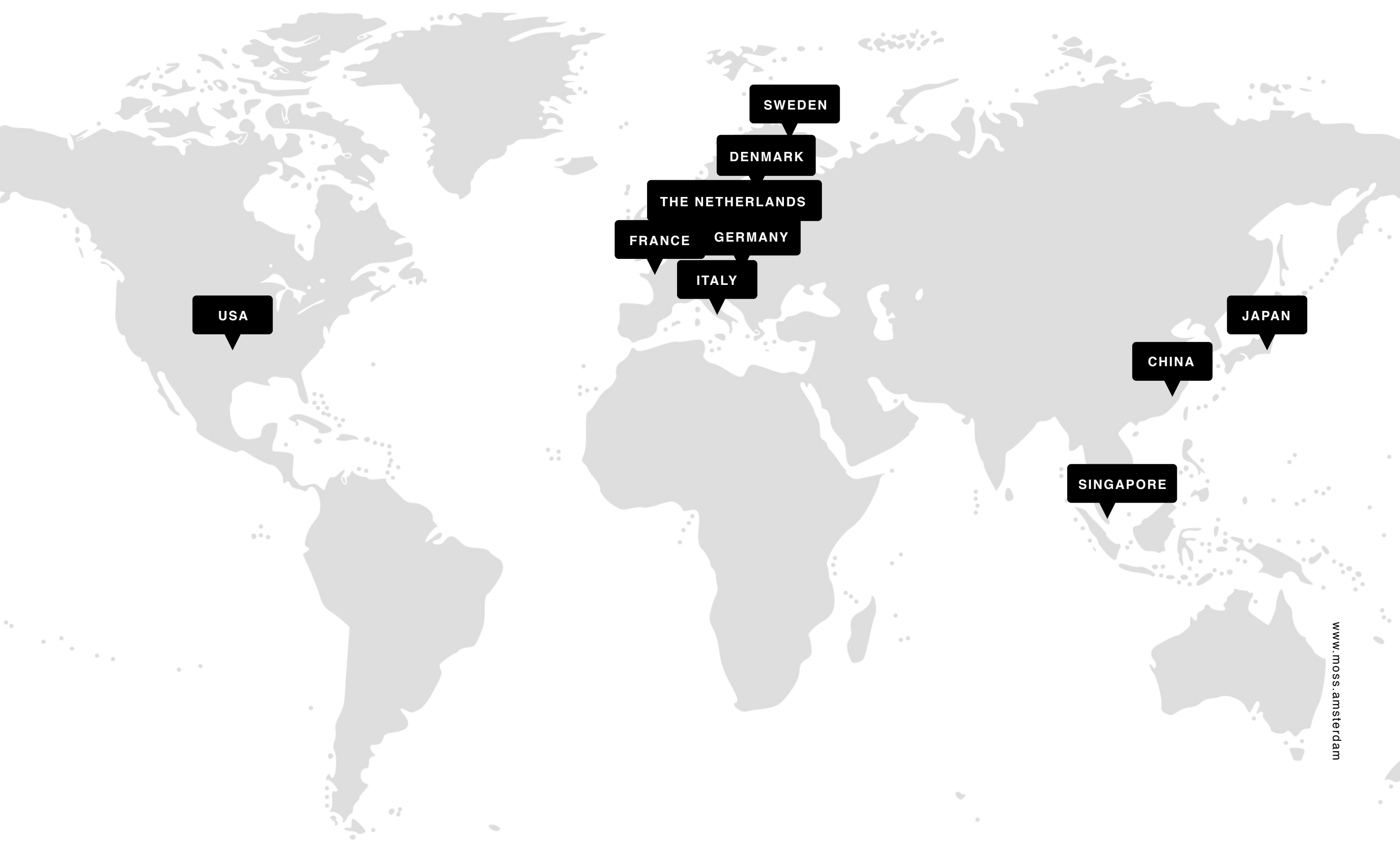
INTERIOR

An interior space filled with plants is not so common, but nowadays impossible to avoid. Our designs give an extra dimension in ways to integrate plants in your interior. These solutions range from ***green lungs, especially designed interior planters and healthy workspaces.***



HRBS (URBAN FARMING)

Locally produced food is the future, our Urban Agricultural projects integrate edible greens in the most convenient way for the user. We create solutions and innovations to make the produced foods easier to maintain, grow and harvest.



USA

SWEDEN

DENMARK

THE NETHERLANDS

FRANCE

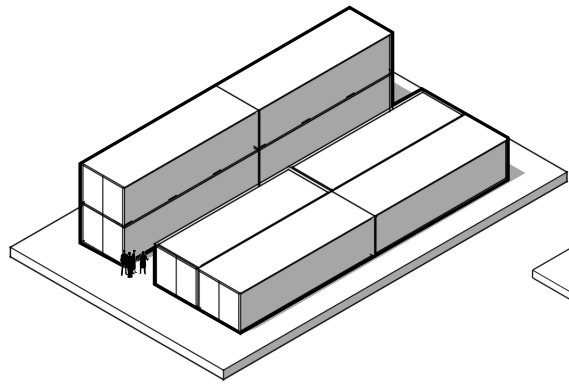
GERMANY

ITALY

CHINA

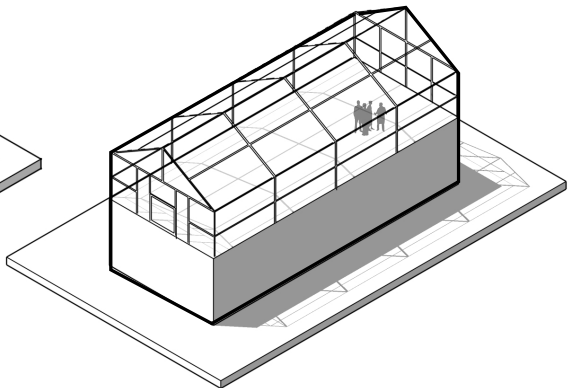
JAPAN

SINGAPORE



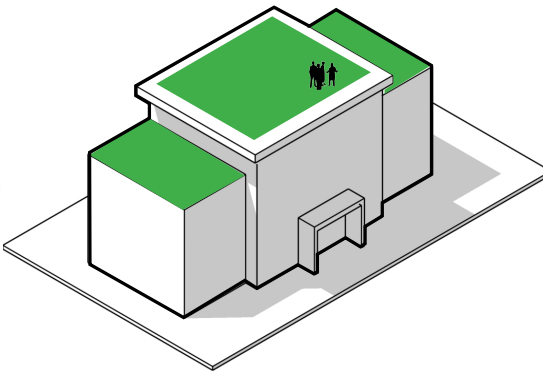
**SHIPPING
CONTAINER**

While modular, transportable, & compact, container farms require adequate climate control & a worker-friendly design.



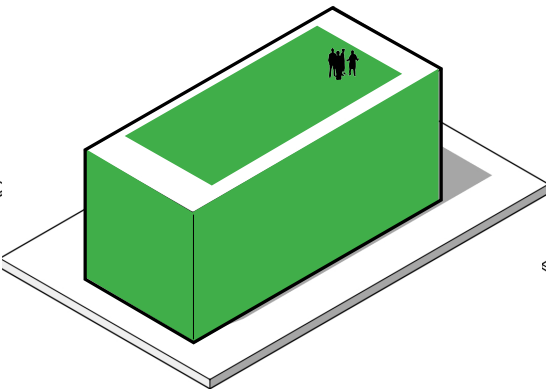
GREENHOUSE

Greenhouses enable local produce & year round production. To reduce heating costs, heat waste from the structure below can be harvested.



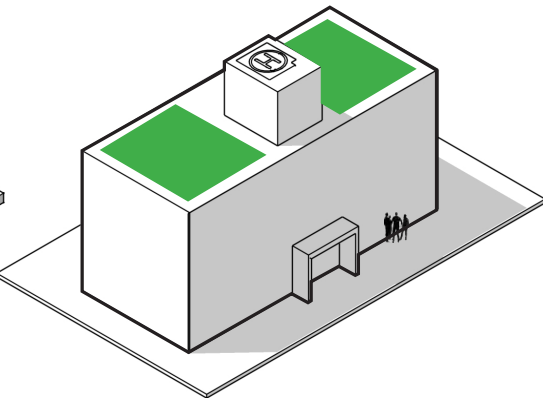
SCHOOLS

School gardening engages the senses, encourages healthy eating, aids the development of fine motor skills, & teaches responsibility.



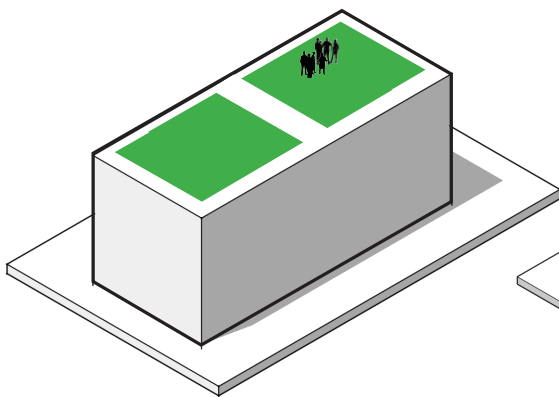
**COMMERCIAL
CENTERS**

Food production in & around shopping centers can be integrated to building functions like restaurants, markets, & kid's activities.



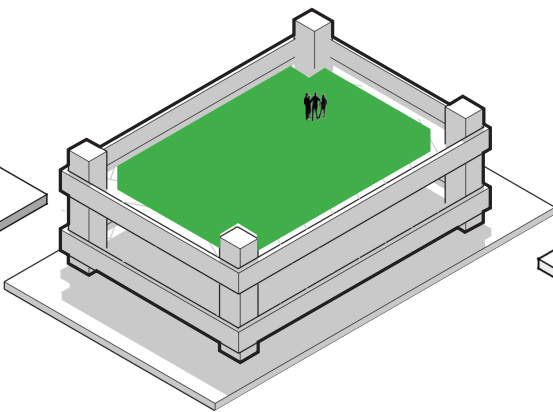
HOSPITALS

In physical rehabilitation, horticultural therapy can help strengthen muscles & improve coordination, balance, & endurance.



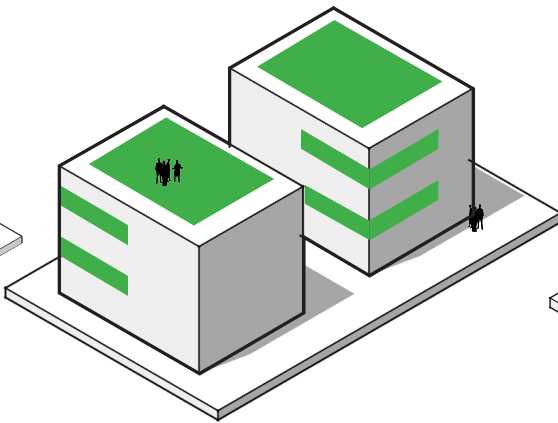
HOTEL & BAR

Incorporating an accessible roof garden into hospitality design can add value, not just to the user's experience, but also to the property.



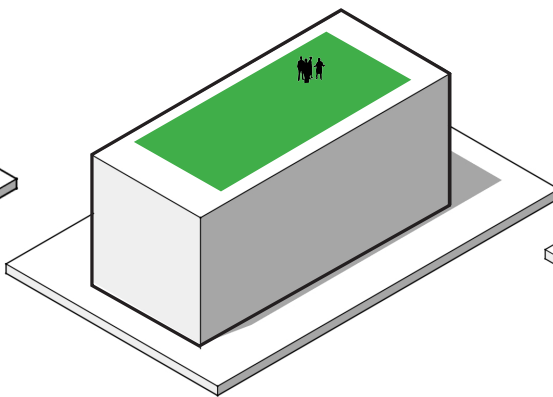
PARKING GARAGE

The upper areas of these substantial and increasingly less-used structures are ideal for green roof farm systems.



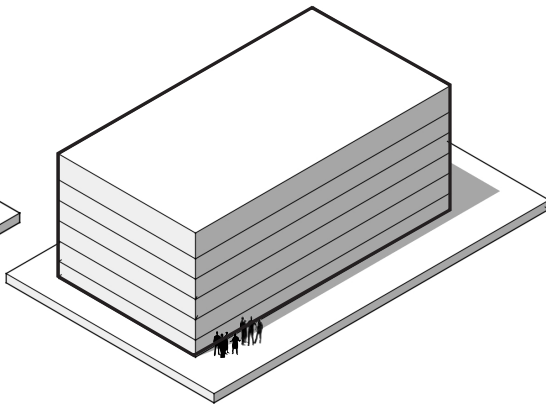
**HIGH DENSITY
RESIDENTIAL**

Shared gardens foster community involvement & provide neighbors with a shared interest while contributing to well-being.



INSTITUTIONAL

Vegetated work spaces provide a place for relaxation & are shown to increase job satisfaction, productivity, & reduces stress.



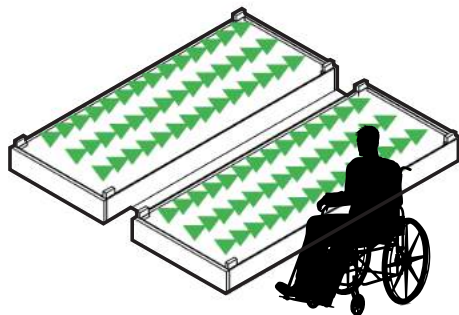
VERTICAL FARM

Layers of farming & controlled-environment technology controls light, humidity, temp, & gases to bring year-round fresh produce.



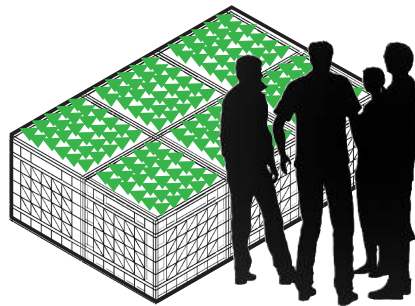
MODULAR GROWING TRAYS

Modular systems do have a higher upfront cost but can be swapped out to offer continuously fresh produce, even in harsh climates.



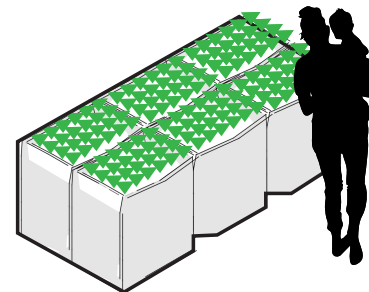
RAISED BEDS

Raised beds are characterized by their simple construction & low cost, however they can deteriorate & are hard to move.



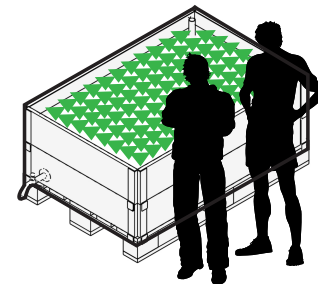
RE-USED CONTAINERS

These readily available materials are affordable, easy to set up, & temporary, but care must be taken for good drainage.



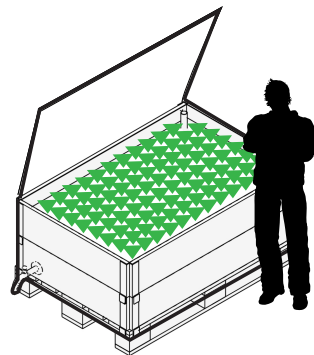
GROW BAGS

Bags are optimal for temp. farms; they're affordable, easy to install, & movable. Good drainage & stable weight against wind is important.



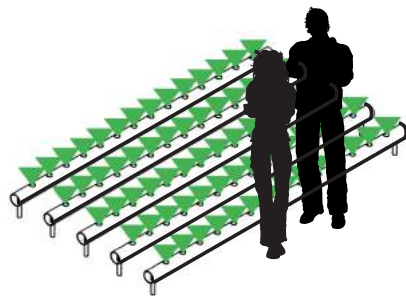
SUB- IRRIGATED

Self-watering beds or containers significantly reduce labor efforts. Attention must be paid to soil metabolism.



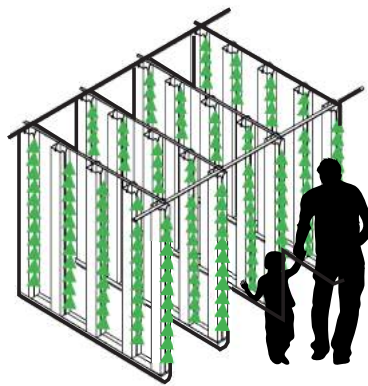
COLD FRAME

This system offers a "mini greenhouse" which is useful for keeping polluted or harsh elements out; can also be used for seeding.



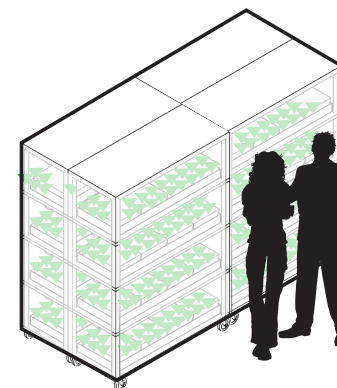
HYDROPONICS

Grows plants using mineral nutrient systems in water; uses up to 95% less water than traditional farming, is lightweight & offers a high crop yield.



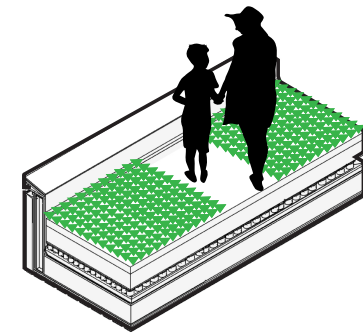
VERTICAL GROW TOWERS

Vertical grow towers save space, are movable & resource efficient. They can be paired with aquaponics (fish & plants together without soil).



CLIMATE CONTROLLED

High-tech consolidated systems have a higher upfront cost, but are optimal for controlling light, humidity, temp, & gases.



GREEN ROOF FARM

Roof farms contribute to UHI mitigation, building insulation, stormwater retention, & habitats for biodiversity but require ~300kg/m2.

What?

B.Babylon - One of Holland's largest green roofs is producing fresh crops and herbs on top of a co-working space



HOPP - Hotel Casa in Amsterdam grows fresh crops for its cocktails and snacks.



THE GREENHOUSE RESTAURANT - more than 600 crops grow above a restaurant in Utrecht



ZOKU - Herbs, small veggies & edible flowers are grown on the roof of Hotel Zoku for the seasonal menu



VERMEER - Fresh veggies, fruits, veggies, and tubers are thriving near Central Station



HOTEL ARENA - Chefs step outside to their terrace for fresh trimmings



LA PLACE - Guests can enjoy fresh air and a view while being surrounded by edible & biodiverse vegetation.



LOWLANDS - A zerowaste pop-up vertical farm



RSA

Restaurant Supported Agriculture

hi **freshness,**
a touch of **hrbs!**

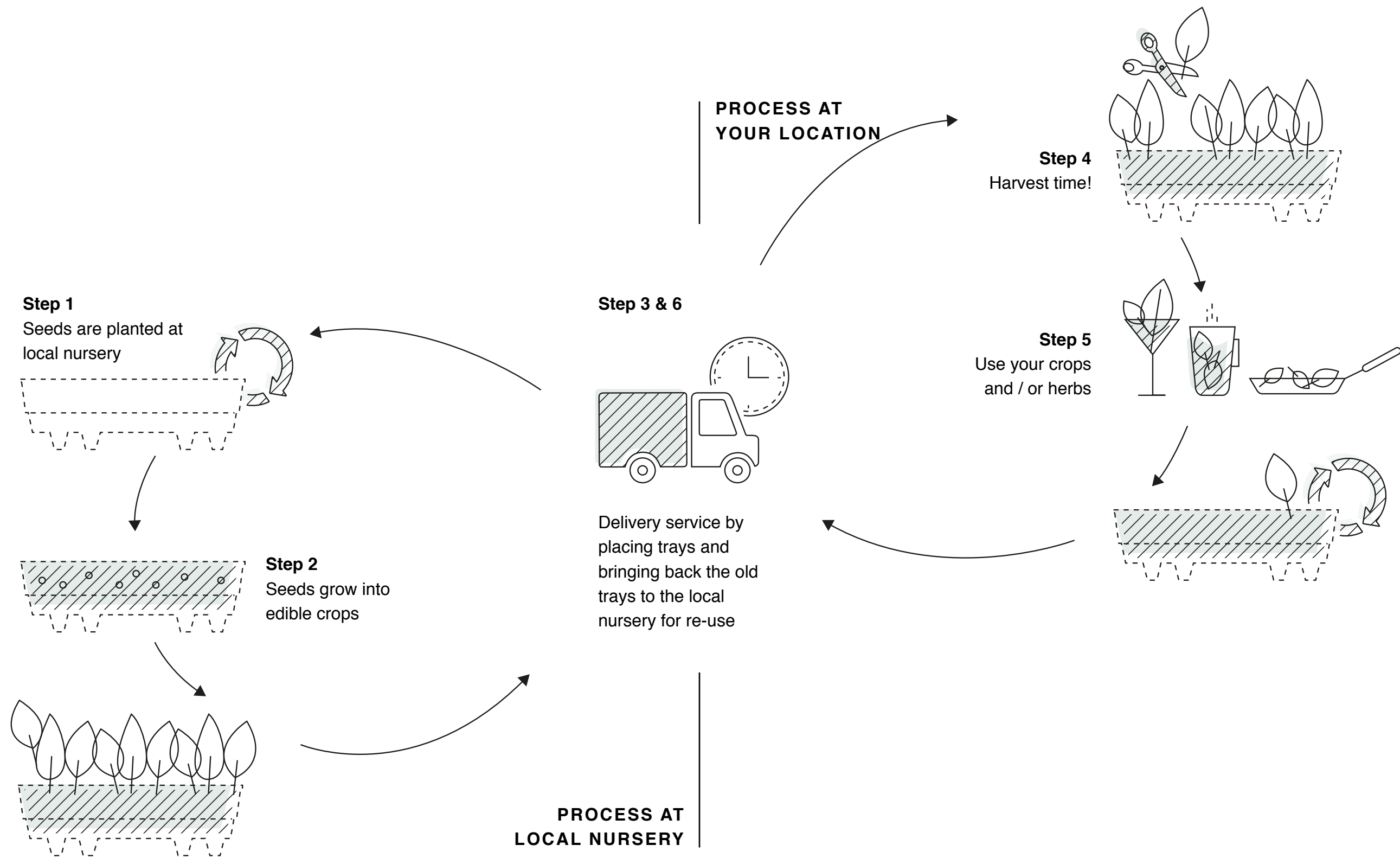
hrbs. is as fresh as it gets! We deliver fresh herbs at your doorstep throughout the year. You can choose the type of herbs you want at any time and the hardware that fits your surroundings best. With our specially designed hrbs. product we can bring you the most fresh and easy to harvest herbs for everyday use, up to at least four weeks of usage.

hydroponic **r**otational **b**otanic **s**ervice

WHY HRBS?









TRAY AT NURSERY



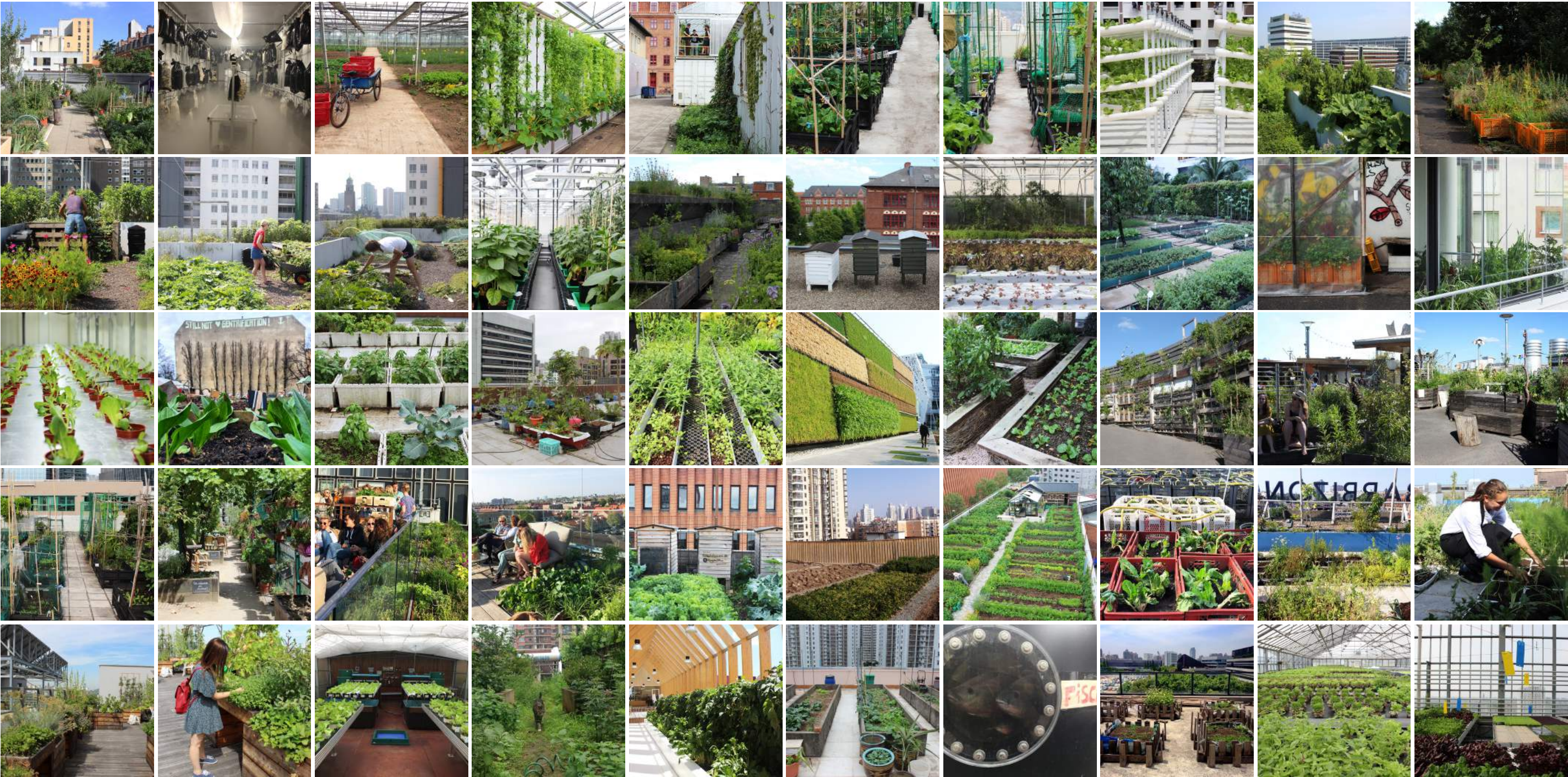
TRAY ON ITS WAY TO THE CLIENT



TRAY IN FURNITURE AT THE CLIENT



[HTTPS://UPFARMING.NET/](https://upfarming.net/) - World-wide case studies of Building Integrated Agriculture



CSA

Community Supported Agriculture

ØSTERGRO - Every week CSA members pick up their share of the roof's harvest



DAKAKKER - Community members get their hands on nature in nature



CHAI WAN CITY FARM - After 3 workshops, Urban Farmers can rent out and tend to raised beds in Hong Kong



Therapeutic

ROBERT DOISNEAU - A therapeutic garden with ergonomic planter beds above a rehabilitation center and retirement home



ONE FARRER - Patients at a hospitality complex in Singapore can enjoy a fully operational rooftop garden.

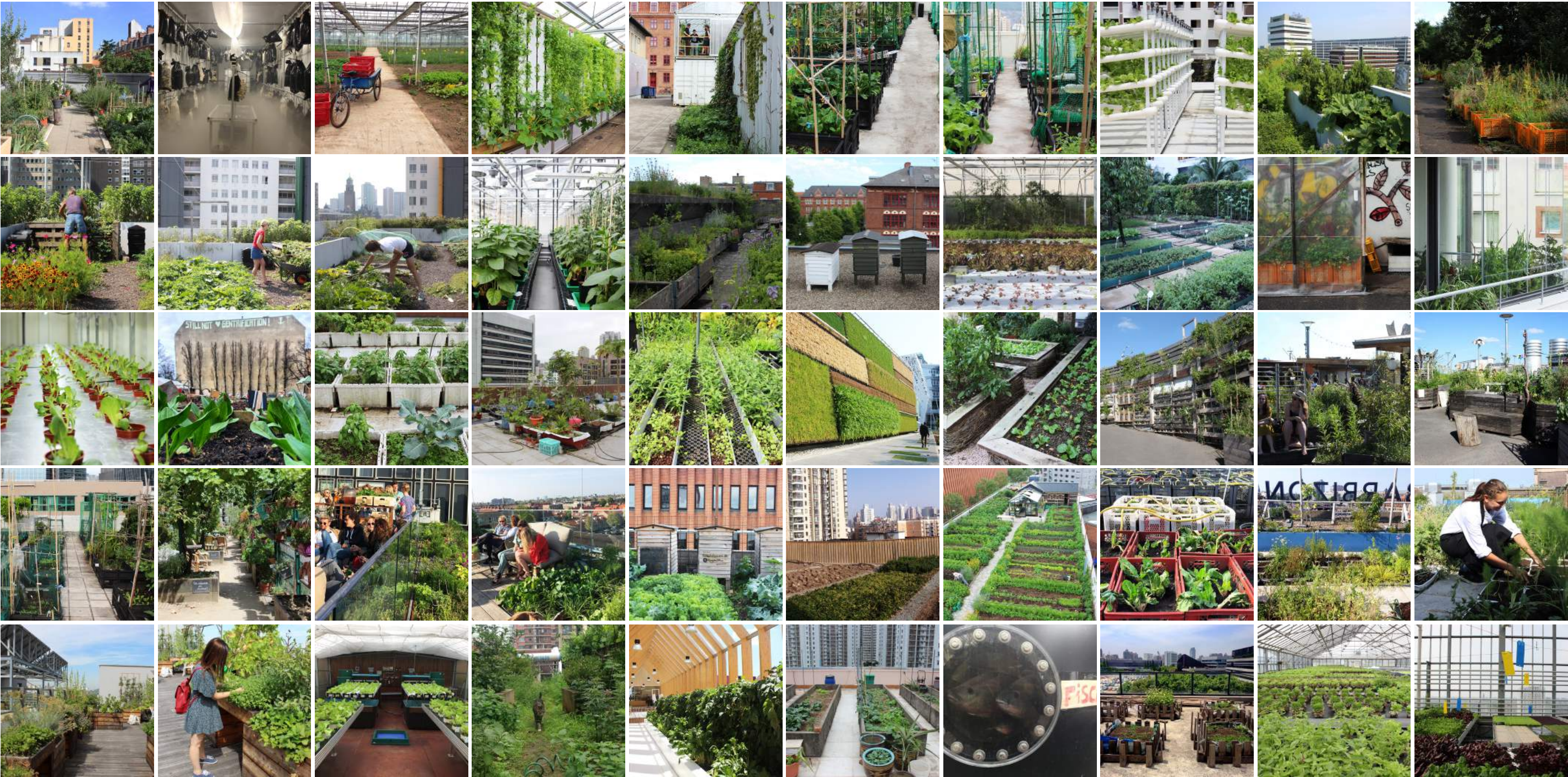


Research Oriented

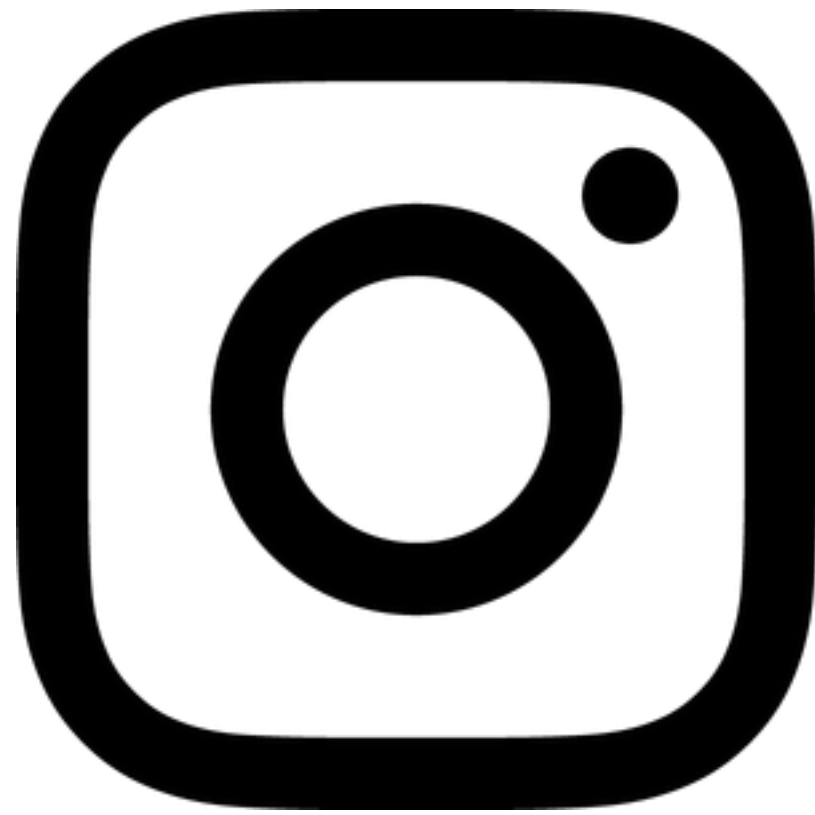
AGROPARIS TECH - Research and scientific experiments about urban waste and pollution take place here since 2012



[HTTPS://UPFARMING.NET/](https://upfarming.net/) - World-wide case studies of Building Integrated Agriculture



Thanks, let's make
the world
a lot greener
together!



moss_amsterdam
hrbs_nl



<https://moss.amsterdam/>
<https://www.hrbs.com/>